



NEWSLETTER

of the WISCONSIN ENTOMOLOGICAL SOCIETY

Volume 20, Number 1

Les Ferge, Editor

March 1993

NEXT MEETING IN MILWAUKEE ON APRIL 3

The next meeting of the Wisconsin Entomological Society will be held on Saturday, April 3 at the Milwaukee Public Museum. The collection will be open for viewing from 12:00 noon until 1:30 PM. The meeting itself will begin at 1:30 in the Lime Room on the ground floor. Please check in with Security in the main lobby to be admitted. A map with directions and locations of nearby parking areas appears on the back of this Newsletter.

The program will feature Jim Ebner, author of *Butterflies of Wisconsin*, and a showing of his new video *Classic Wisconsin Butterflies*, the first of its kind in the country (see details inside). Stunning videography of over 50 species makes this something not to be missed. Ample time is available for anyone else wishing to make a presentation, and the collection will be reopened after the program.

KARNER BLUE ADDED TO FEDERAL ENDANGERED LIST

Cathy Bleser

Wisconsin will play a key role in the protection and recovery of the Karner Blue butterfly (*Lycaeides melissa samuelis*), just added to the federal list of endangered species (Federal Register, Vol. 57, No. 240, December 14, 1992). This small, delicate blue butterfly is the first extant Wisconsin insect to receive federal protection (the endangered giant carrion beetle was historically recorded here). In fact, Wisconsin appears to support a substantial share of the remaining Karner Blue populations in the eastern U.S. and Canada.

The Karner Blue inhabits sandy oak savanna and pine barrens habitats supporting wild lupine, its sole larval foodplant. These ecosystems are among the most imperiled in the Midwest, and the dramatic decline of the Karner Blue and a number of other animals that depend on this community signals this loss. The Karner Blue is now extirpated or nearly gone in many states throughout its historical range. Wisconsin, Michigan and New York support the best remaining populations.

In Wisconsin, the Karner Blue is concentrated throughout the central sands region and in Burnett County in the far northwest. Approximately 92 discrete populations have been discovered, with the majority being on public lands such as Necedah National Wildlife

The Newsletter of the Wisconsin Entomological Society is published three times a year, at irregular intervals. It is provided to encourage and facilitate the exchange of information by the membership, and to keep the members informed of the activities of the organization. Members are strongly encouraged to contribute items for inclusion in the Newsletter. Please send all news items, notes, new or interesting insect records, season summaries, research requests, and report any address changes to the editor: Les Ferge, 7119 Hubbard Avenue, Middleton, WI 53562.

Refuge, Fort McCoy, Black River State Forest, and Hartman Creek State Park. Many Karner Blue sites are now confined to small and isolated remnants of lupine habitat along highway rights-of-way, powerline corridors, or privately owned openings. Most of the former barrens habitat has now grown into oak and pine forest in the absence of wildfires, or has been lost to agriculture, pine plantations, or housing and urban development.

Federal listing of the Karner Blue means it is now illegal to kill, collect, harass or harm this animal, or to destroy the vegetation amongst wild lupine plants where it spends the majority of its life cycle as eggs and larvae. Federal permits may be issued that would allow the incidental taking of the Karner Blue, or taking for scientific or habitat management purposes.

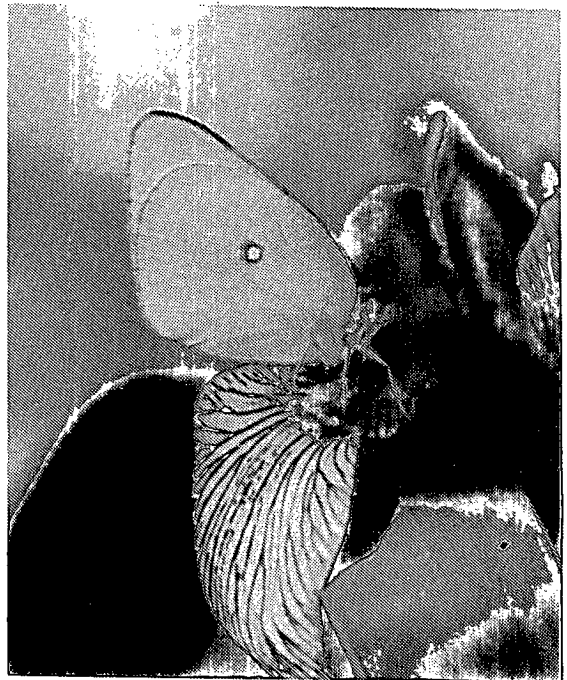
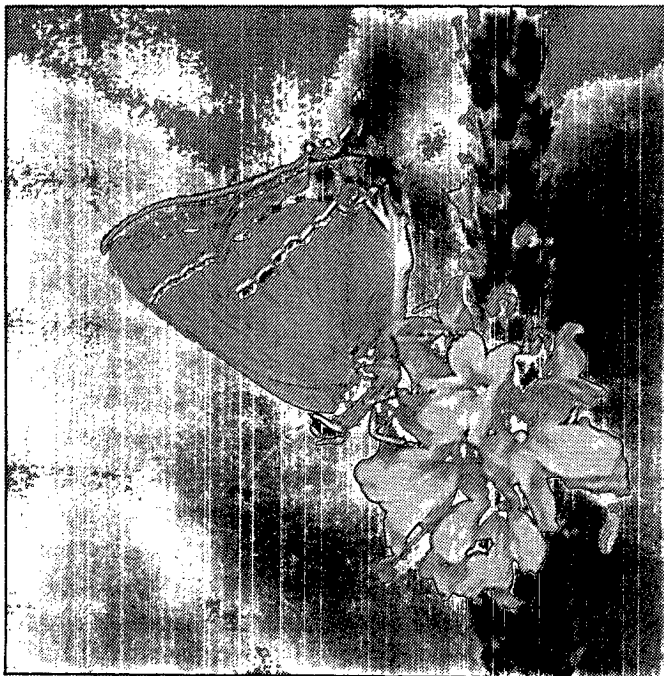
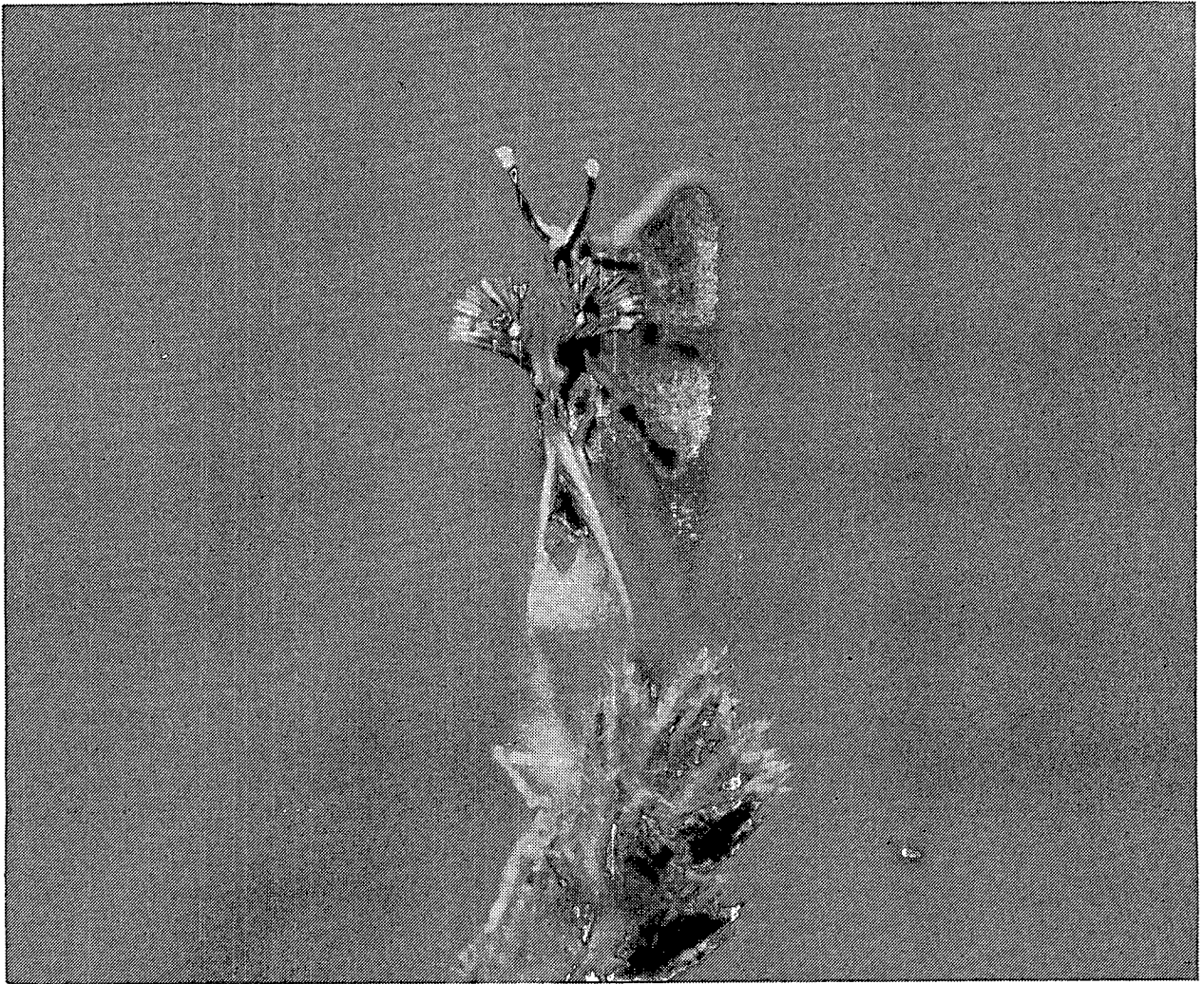
Cooperative efforts are underway between the Wisconsin DNR and the U.S. Fish and Wildlife Service to begin the recovery process for the Karner Blue. Recovery efforts will focus on management and restoration of larger reserves, and will tie in well with growing interest in protecting and restoring barrens landscapes in Wisconsin.

WISCONSIN BUTTERFLY VIDEO AVAILABLE

Classic Wisconsin Butterflies captivates with poignant wildlife videography more than 50 varieties of butterflies. Representing a distinct majority of the region's most significant resident and migratory species, all are portrayed accurately and vividly. Jim Ebner, life-long science educator and author of the Milwaukee Public Museum's 1970 popular science handbook *Butterflies of Wisconsin*, brings into present day focus with camera and comment the dynamics of butterfly biology and behavior. Habitat, common and scientific names, size, coloration and features, life history, distribution, flight time, relative abundance and food plants are revealed with hundreds of superb, living close-ups. This one hour video guide is accompanied with a complete list of the 154 species recognized for the state's fauna. It is intended for enthusiasts of all ages throughout Wisconsin and elsewhere to help find, know and appreciate these tranquil handicrafts of nature. The list price is \$34.95, including shipping and state tax. A 10% discount is being offered to active, paid Wisconsin Entomological Society members. Order from E/D Productions, P.O. Box 556, Okauchee, WI 53069.

1992 W. E. S. PHOTO SALON

The winning entry in the Annual Photo Salon held at last November's meeting was a most unusual rear view of a gray hairstreak (*Strymon melinus*), photographed by Karl Legler (next page, top). The runners-up included a side view of the same butterfly photographed by Karl (lower left), and a very colorful shot of a pink-edged sulfur (*Colias interior*) on a wild iris flower, photographed by Robbye Johnson (lower right).



1992 WISCONSIN LEPIDOPTERA SEASON SUMMARY

Coordinator: Les Ferge (LF). Contributors: Tom Barina (TB), Susan S. Borkin (SSB), Bob Borth (BB), Jim Ebner (JE), Jeff Javorek (JJ), Robbye Johnson (RJ), Hugo Kons Jr. (HK), Karl and Dorothy Legler (KL), Judi Maxwell (JM), James C. Parkinson (JCP), Tom Rocheleau (TR), Clark Schultz (CS), Ann Swengel (AS), Scott Swengel (SS), James R. Wiker (JRW), Andrew Williams (AW).

New county records are indicated by county names in CAPITAL letters, new state records by the STATE notation.

A rather mild winter was experienced, with spring being cool and dry and the remainder of the season cool and quite wet. Growing degree-day accumulations lagged behind normal and far behind those of 1991, with conditions 2-3 weeks delayed later in the season. Late occurrences and prolonged flight periods were noted for many species. A strong influx of *Vanessa cardui* was first reported on 1-2 May in Dane Co (LF, KL), Sauk Co (AS), Winnebago Co (CS) and Douglas Co (RJ), with swarms seen in Green and Waukesha Cos 8 May-20 Jun (JE) and in Douglas Co in late May (RJ). Larvae were found on many *Cirsium* species (CS, AW), including the endangered *C. pitcher* on dunes in Door Co (LF), *Lupinus perennis* (AS) and *Arctium minus* (CS). *Danaus plexippus* arrived about as expected (SSB), with first sightings on 18 May, Winnebago Co, EARLY (CS) and 30 May, Douglas and Bayfield Cos (LF). Numbers were down, but not dramatically at a Door Co study site (SSB), but appeared to be about normal overall (AS). Few other migrant species and individuals were found, however *Eurema lisa* was seen in small numbers 8 Aug-9 Sep along the Mississippi River in Grant and Crawford Cos (JCP, TR, LF). Extensive data were received from the DNR's Southeastern Wisconsin Wetland Lepidoptera Survey (BB, TB, SSB, HK), and from a survey at Fort McCoy, Monroe Co sponsored by the Department of Defense and The Nature Conservancy (JM). The Wisconsin moth list being compiled by Les Ferge and George Balogh currently stands at 1115 macro species.

BUTTERFLIES: *Erynnis martialis*, 29 Jul-15 Aug, Burnett Co (AS, JCP), Douglas Co (RJ, KL). *Erynnis baptisiae*, 2 Aug, JACKSON Co (LF). *Oarisma powesheik*, 21 Jul, Waukesha Co (SSB, HK, KL). *Hesperia ottoe*, 3-6 Jul, Dane Co, new site (TR); 29 Jul-5 Aug, MONROE Co, nectaring on *Monarda punctata* (JM). *Pompeus verna*, 20 Jun, Grant Co, 6 Jul, Dane Co (TR). *Atalopedes campestris*, 1 Sep, Milwaukee Co (JE). *Euphyes dion*, 27 Jul, Grant Co, nectaring on *Pycnanthemum virginianum* (AW). *Euphyes bimacula*, 3-11 Jul, Jackson Co (TR, LF); 8 Jul, Barron Co (KL); 9-10 Jul, DOOR Co (JRW); 8 Aug, Kenosha Co (BB, HK). *Pontia protodice*, 5 Sep, Crawford Co, several seen (TR); 19 Sep, Waukesha Co, 1 female (JE). *Gaeides xanthoides dione*, 20 Jun, Grant Co (TR); 17 Jul, Milwaukee Co (JE). *Epidemia dorcas*, 9 Jul, Washburn Co (KL); 11 Jul-4 Aug, DOUGLAS Co (LF, RJ, KL). *Epidemia helleoides*, 11 Jul, ASHLAND Co (KL); 15 Aug, BURNETT Co (JCP); 13 Sep, Waukesha Co (JE). *Harknclenus titus*, 4 Sep, Bayfield Co, LATE (LF). *Incisalia irus*, 20 May, Jackson, Wood Cos (AS). *Strymon melinus*, 17 Jul, TREMPEALEAU Co (KL). *Lycaeides melissa samuelis*, 26 May-10 Jun and 27 Jul-21 Aug, Jackson Co (AS); Juneau Co (JE); Menominee & Portage Cos (HK); Monroe Co (JM); Wood Co (AS, JCP). *Plebejus saepiolus*, 29 Jun, Bayfield Co (JCP). *Calephelis mutica*, 27 Jul-19 Aug, Fond du Lac

Co (BB, SSB, JE, HK); Ozaukee & Washington Cos (SSB). *Speyeria idalia*, 30 Jun-25 Jun-25 Aug, Green Co (AS, KL). *Clossiana titania grandis*, 1-15 Aug, Douglas Co (LF, RJ, KL, JCP). *Phyciodes batesii*, 12-30 Jun, Langlade, Outagamie Cos (HK); 27 Jun-4 Aug, MONROE Co (JM). *Polygonia satyrus*, 4 Aug, Douglas Co (RJ); 21 Aug, Florence Co (TR). *Polygonia faunus*, 8-15 Aug, Douglas Co (RJ, JCP); 21 Aug, Florence Co (TR). *Oeneis chryxus strigulosa*, 21 May, Marinette Co (JE).

MOTHS: HEPIALIDAE - *Sthenopis thule*, 16 Jul, WAUKESHA Co (HK); 17 Jul, DANE Co (TR). MIMALLONIDAE - *Lacosoma chiridota*, 30 May, GRANT Co, STATE (TR). SATURNIIDAE - *Hemileuca maia*, 22 Sep, PORTAGE Co (HK); JEFFERSON Co, larvae on purple loosestrife (Rich Henderson via LF). SPHINGIDAE - *Dolba hyloeus*, 6-21 Aug, OUTAGAMIE Co (HK); 21 Aug, Marathon Co (JCP). *Sphinx luscitiosa*, 27 May, Burnett Co, on barrens (TR); 12 Jun, OUTAGAMIE Co (HK). *Hemaris gracilis*, 27 May, Burnett Co, on barrens (TR). *Eumorpha achemon*, 26 Jul, Waukesha Co (HK). *Deidamia inscripta*, 1 May-12 Jun, OUTAGAMIE Co (HK). NOTODONTIDAE - *Notodonta scitipennis*, 21 May, Douglas Co (TR). *Hyparpax aurora*, 7 Jul, MONROE Co (JM). ARCTIIDAE - *Crambidia casta*, 23 Aug, MANITOWOC Co, on dunes (LF); 20 Sep, MONROE Co, on barrens (JM). *Grammia phyllira*, 23 Aug, MANITOWOC Co, on dunes (LF). NOCTUIDAE - *Macrochilo bivittata*, 28 Jul, BAYFIELD Co, (LF). *Macrochilo louisiana*, 25 Jul, BAYFIELD Co, (LF). *Catocala coelebs*, 30 Aug, BAYFIELD Co, 2nd state locality (LF). *Catocala nebulosa*, 23 Aug, OUTAGAMIE Co (HK). *Catocala luciana*, 17 Sep, Outagamie Co (HK). *Catocala cara*, 5 Sep, Green Lake Co; 21 Sep, Marathon Co (JCP). *Catocala abbreviatella*, 28 Jun-18 Jul, Dane Co, new site (TR). *Catocala whitneyi*, 17 Jul-1 Aug, DANE Co (TR); 17 Aug, MONROE Co (JM). *Autographa flagellum*, 29 Jun, DOUGLAS Co (JCP). *Syngrapha selecta*, 25 Jul & 30 Aug, Bayfield Co (LF). *Syngrapha viridisigma*, 22 Aug, DOOR Co and 2 Sep, BAYFIELD Co (LF). *Tarachidia virginalis*, 3 Aug 1987, SAUK Co, STATE, on sand prairie, det Eric H. Metzler (LF). *Acontia terminimacula*, 21 Jul, OUTAGAMIE Co (HK). *Acronicta falcata*, 21 May, DOUGLAS Co (TR). *Papaipema lysimachiae*, 15-21 Sep, PORTAGE Co (HK). *Papaipema inquaesita*, 16 Sep-6 Oct, PORTAGE Co, 23 Oct, OUTAGAMIE Co (HK); 20 Sep, MONROE Co (JM). *Papaipema nepheleptena*, 17 Sep-5 Oct, PORTAGE Co (HK). *Papaipema speciosissima*, 1 Oct, PORTAGE Co, STATE (HK). *Papaipema appassionate*, 30 Aug-1 Sep, BAYFIELD Co (LF). *Papaipema maritima*, 5 Oct, PORTAGE Co (HK). *Papaipema eupatorii*, 16-25 Sep, PORTAGE Co (HK). *Hydraecia micacea*, 4 Aug, OUTAGAMIE Co (HK); 30 Aug, BAYFIELD Co (LF); 3 Sep, GRANT Co (JCP). *Chytonix sensilis*, 30 Jul, BAYFIELD, STATE (LF). *Lithophane amanda*, 20 Apr, OUTAGAMIE Co (HK); 19 Sep, DOOR Co (LF). *Brachylomia discinigra*, 30 Jul, BAYFIELD Co, STATE (LF). *Trichoclea artesta*, 17 Jul, DOOR Co, dunes (LF). *Sideridis maryx*, 21 May, Douglas Co (TR). *Melanchra assimilis*, 26 Jul, PORTAGE Co (JJ). *Melanchra picta*, 31 May, MARATHON Co (JJ); 24 Aug, GRANT Co (AW). *Lacanobia nevadae*, 30 Jul, BAYFIELD Co (LF). *Papestra quadrata*, 21 May, Douglas Co (TR). *Orthosia segregata*, 9 May, Door Co (LF). *Copablepharon longipenne*, 23 Aug, MANITOWOC Co, dunes, 2nd state locality (LF). *Eucoptocnemis fimbriaris*, 4 Sep, MENOMINEE Co (HK); 20 Sep, MONROE Co (JM). *Euxoa divergens*, *Euxoa sinelinea*, 27 Jul, BAYFIELD Co (LF). *Euxoa pleuritica*, 21 Aug, DOOR Co (LF). *Euxoa niveilinea*, 20 Sep, MONROE Co (JM). *Actebia fennica*, 21 Aug, DOOR Co (LF); 30 Aug, PORTAGE Co (HK); 1 Sep, BAYFIELD Co (LF). *Xestia oblata*, 31 Jul,

BAYFIELD Co (LF). *Protolampra rufipectus*, 2 Sep, BAYFIELD, STATE (LF). *Schinia indiana*, 5-7 Jun, Menominee Co (HK, BB). *Schinia florida*, 17 Jul, DOOR Co (LF); 4 Sep, GRANT Co (JCP). *Schinia lucens*, 28 Jun, Dane Co, 16 Jul, Columbia Co (TR); 21 Jul, OUTAGAMIE Co (HK). *Schinia nundina*, 4 Sep, GRANT Co (JCP).

1992 XERCES SOCIETY JULY FOURTH BUTTERFLY COUNT

Ann Swengel

By most measures, butterfly counting was poorer in the Midwest in 1992 compared with both 1991 and 1990, although the number of counts and counters increased this year. The Midwest region comprises Illinois, Indiana, Iowa, Michigan, Minnesota, Ohio and Wisconsin. In 1992, the sum of counters on all 45 midwestern counts was 421, compared with 407 on 39 counts in 1991 and 133 on 26 counts in 1990. We counted 23,604 individuals (524.5 per count) compared to 31,515 individuals (808.1 per count) in 1991 and 15,569 individuals (598.8 per count) in 1990. Thirty-five established counts were repeated in 1992. Collectively, we found 102 species, compared to 108 in 1991 and 95 in 1990, with an average of 23.0 species per count, compared to 27.4 in 1991 and 25.1 in 1990.

Some species found this year have never been reported from this region's counts previously, including *Lycaeides idas*, *Anaea andria*, and *Erynnis martialis*. Also, some resident species normally in flight during the count period have been rediscovered this year, including *Lycaena helloides*, last reported in 1990, and *Chlosyne harrisii*, last reported in 1986.

The species with the highest numbers on a single count were typical species at expectable levels: *Thymelicus lineola* (6,871, Emmet, MI), *Colias philodice* (756, Rogue, MI), and *Cercyonis pegala* (694, Sandhill, WI). The three most frequently found species this year were the same species in the same order as last year: *C. philodice*, *Pieris rapae* and *C. pegala*. No species was found on all midwestern counts, but *Danaus plexippus* was found on all but one count (97% of counts), just like last year, followed by *P. rapae*, 40 of 45 counts, 88.9% (compared to 90% in 1991) and *C. philodice*, 39 of 45 counts, 82.0% (compared to 90% in 1991). The next most frequently found species fluctuate considerably among the years: *Vanessa cardui*, 37 of 45 counts (82%), compared to 44% in 1991, 38% in 1990 and 30% in 1989; and *Vanessa atalanta*, 34 of 45 counts (76%), compared to 56% in 1991, 96% in 1990 and 74% in 1989.

Of immigrant species, most prominent was *V. cardui*, which reached by far its greatest numbers and most widespread representation ever in the midwestern counts, with a total of 500 individuals (11.1 per count) observed. Otherwise, it was a poor year for immigrants. Of those species that are immigrants in most of the region (excluding the Shawnee Hills count in extreme southern Illinois), the nine kinds found was rather good, but the 0.13 individuals per party-hour only exceeded 1988 (0.07 per party-hour) and tied with 1989 for the second worst rate since 1986.

Last year remains the best count ever for midwestern Monarch observation. Despite cool, wet weather on both their overwintering grounds and their midwestern breeding sites, Monarch nevertheless fared quite normally in our 1992 counts. Collectively, we

observed 697 Monarchs at a rate of 2.1 per party-hour, the third highest rate since 1986. Last year's total was 1,659 with 4.8 per party-hour.

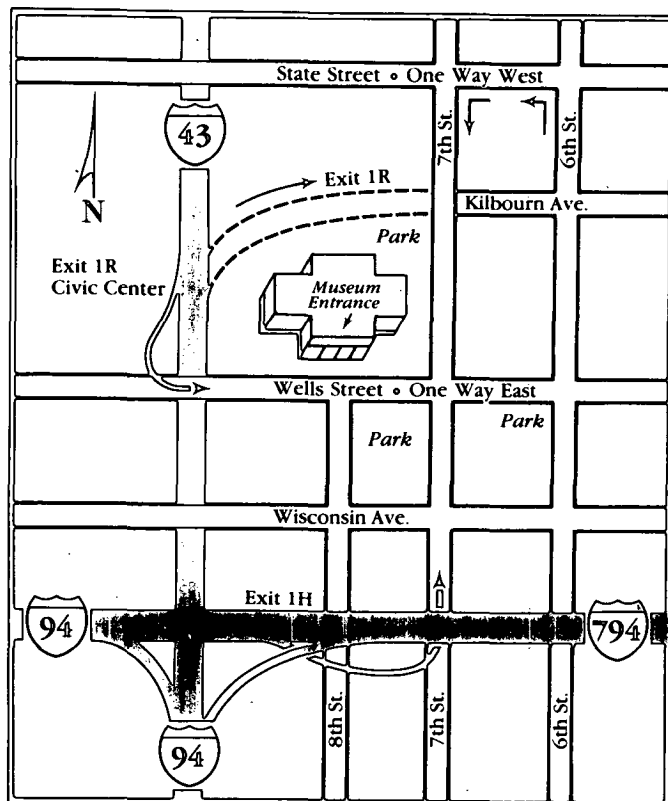
General weather conditions in the region were, frankly, strange, with some areas experiencing a remarkably mild winter, with spring variably cold then hot in some places. Regionwide, the summer was amazingly cold and cloudy, with the northern parts experiencing summer frosts.

NEW PUBLICATIONS

Conservation Management of the Prairie Skippers Hesperia Dacotae and Hesperia Ottoe by Robert Dana. This research report covers the basic biology of these species and the threat of mortality during prescribed burning in spring. The price is \$6.00, with checks made payable to "University of Minnesota." Order Item No. AD-SB-5511-S from Minnesota Extension Service, Distribution Center, 3 Coffey Hall, 1420 Eckles Avenue, Saint Paul, MN 55108-6064.

COLD-BLOODED ANIMAL CONFERENCE IN MADISON

The second conference on the Conservation of Wisconsin's Cold-Blooded Animals will be held on Saturday, March 13, 1993 in the Humanities Building (corner of N. Park Street and University Avenue) on the U.W. Madison campus. Concurrent sessions will be held in rooms 2650 and 3650 from 9:00 AM to 4:00 PM. The keynote address "New Management for Wisconsin's Cold-Blooded Animals" will be presented by Charles Pils of the DNR's Bureau of Endangered Resources. Of particular interest are several presentations on invertebrates and insects, including the Karner Blue, mayflies, dragonflies, riffle beetles and spiders.



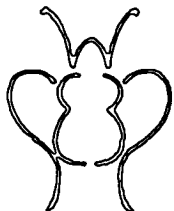
DIRECTIONS

From North:
 South on I-43
 Exit 1R (right)
 Civic Ctr. / Wells St.
 Wells St. to 8th St.

From South:
 North on I-94 / I-43
 Exit 1R (right)
 Civic Ctr. / Kilbourn Ave.
 Left on 6th St.
 Left on State St.
 Left on 7th St.

From West:
 East on I-94
 Exit 1H (right)
 Civic Ctr. / 7th St.
 3 Blocks North on
 7th St. to Wells St.

WISCONSIN ENTOMOLOGICAL SOCIETY



Les Ferge, Editor
 7119 Hubbard Avenue
 Middleton, WI 53562

ADDRESS CORRECTION REQUESTED